



WORKSHOP

HEIRLOOM-QUALITY GLIDERS

2026

## D&E...HELPING YOU MEET YOUR CUSTOMER NEEDS WITH HEIRLOOM QUALITY GLIDERS AND PERSONALIZED CUSTOMER SERVICE

### Is D&E a large furniture factory? NO!

Instead we are a small furniture workshop employing skilled craftsmen who use traditional hands-on woodworking skills and are dedicated to outstanding quality.

### Can you see the quality difference in D&E gliders? YES!

We use only **solid hardwoods**. All our gliders are available in Oak, Cherry, Rustic Cherry, Brown Maple, Hard Maple, Hickory, Rustic Hickory, Elm and Quarter-Sawn White Oak (unless noted otherwise in product details).

The way pieces are joined together is another quality indicator. Our craftsmen use **mortise-and-tenon** joints for lasting construction. Points of stress on a piece of furniture are reinforced for added durability and long life.

When you run your hand over a D&E glider, you can feel the care the woodworker put into creating a **smooth finish**. We believe in enhancing the natural beauty of the wood so that each piece is a unique work of art.

Only the **best fabrics** are used to upholster D&E gliders. We use Heartland fabrics for their large selection of patterns, durability and easy maintenance.

### Does D&E help you meet your customer needs? YES!

Trends change. D&E designs new **innovative styles** to meet customer preferences, from contemporary to rough sawn, while maintaining the classic looks our business was built on.

The term "You Get What You Pay For" is certainly true. You can find "bargain furniture" in all the big box stores, but D&E offers **heirloom-quality pieces at competitive prices** to high-end dealers across the country.

When you have a question or concern, you don't want to wait days to talk to a real person. If you call and get our answering machine, chances are we're out in the shop working, but be assured that **we will return your call in a timely manner**. We understand the need for fast, results-driven customer service. We are here for you.

With 8-year and lifetime warranties on major components, you and your customers can rest easy knowing that you are in good hands with D&E Workshop.

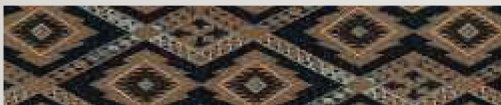


# Over 400 Quality Fabrics to Choose From!



## Standard & Premium

Economical, durable, attractive



## Easy Living Performance

Economical, durable, attractive



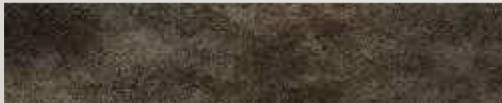
## Revolution®

Soft, durable, stain & fade resistant



## Faux Leather

Nearly 40 color/texture options



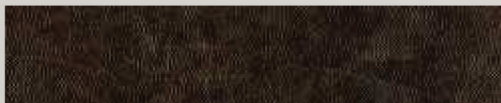
## Ultraleather®

Ultimate softness, durability & beauty



## Genuine Leather

Supple, luxurious, 22 colors/patterns



See all the options at [Heartland-fabrics.com](http://Heartland-fabrics.com)

# TABLE OF CONTENTS

About D&E.....	2-4
D&E Warranties.....	4
Rocker Info.....	5
4-Post Series.....	6-13
Swanback Series.....	14-19
Arcadia Glider.....	20-21
Ashland Series.....	22-25
Sebana Series.....	26-27
Redwing.....	28
Remi.....	29
Lexi "NEW".....	30
Country Chairs Series.....	31-34
Quick Ship Product.....	35

## Discontinued items for 2026

112 Padded Back Glider

## Performance Fabrics by Crypton

Soft - Durable - Easy to Clean - Resists Stains & Odors

Spot cleaning instructions:

- Wipe away excess mess using a clean, dry towel
- Mix a simple soap and water solution (1 tsp enzyme laundry detergent like Tide or Cheer with 2 cups warm water)
- Apply and agitate with a soft-bristle brush
- Blot with a clean towel
- Rinse thoroughly and repeat if necessary (Remember: soap attracts dirt so a thorough rinse is very important)

Green Guard Gold Certified Technology

## Ultraleather®

- 100% Polyurethane surface with reinforced rayon backing
- Soap and water cleanable
- Earth friendly
- Green Guard certified
- Abrasion: 400,000 double rubs

Flammability: CATB 117 NFPA 260-Class-1 UFAC Class-1

# UNIQUE FEATURES AND EXCLUSIVE D&E OPTIONS!



## Locking Mechanism

Has 4 positions from recline to upright

## Lumbar Support

Built right into the back cushion on some models



## Flip-out Footrest

Is an exclusive D&E design

## D&E Quick Ship

Offers 2 different styles for quick turnaround



## Chair-N-Half Glider

2 different styles built 7" wider than standard

## Minnie Gliders

2 different styles for those with smaller builds

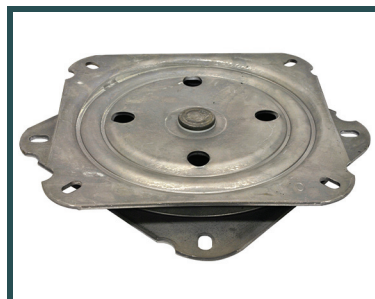


## D&E WARRANTIES



### Bearings

8-year warranty



### Heavy-Duty Swivel Mechanisms

Lifetime Warranty



### Flip-out Hardware

Lifetime Warranty



### Cushion Fabric

2-Year Limited Warranty



All information in this catalog is the latest available at the time of publication and is subject to change. Colors shown in photos may not exactly match the actual colors of finishes or fabrics. Please contact us for samples.

**Because we have sold our rocker styles, the following items will now be available only through SUPERIOR WOODCRAFTS.**

**Models:**

02 Elegant Rocker

111 Crescent Rocker

113 Harrison Rocker

114 Delmont Rocker

115 Artic Rocker

116 Royal Eco Rocker

097 Royal Jumbo Rocker

098 Royal Mission Rocker

096–196 Royal Mission Gliders

**Contact them for photos and pricing.**

**Phone:** 574-825-4692

**Email:** [sales@superiorwoodcrafts.com](mailto:sales@superiorwoodcrafts.com)

**MEMBER OF**  
**NIWA**  
Northern Indiana  
Woodcrafters Association



# 4-POST MINNIE

## 061 - 4 POST MINNIE REGULAR GLIDER

Seat is 2" lower, 1" narrower and 3" less deep than standard 4-post glider. (Page 8 & 9)

**Wood:** Red Oak

**Stain:** Shadow

**Fabric:** R1-163 Campbell

### STANDARD AS SHOWN

Overall size: H 39½" x D 27" x W 30"

Seat Size: D 17" x W 19"

Distance between armrest: 19"

Floor to top of seat cushion: 16"

Seat to top of wood armrest: 8½"

Seat to top of padded armrest: 9½"

Options available:



• Flipout Footrest



• Padded Arms

### SHOWN WITH ALL OPTIONS



### 091 - MINNIE OTTOMAN

Overall size: H 13½" x D 17" x W 19"

# 4-POST MINNIE

161 - 4 POST MINNIE SWIVEL GLIDER

Options available:

**Wood:** Red Oak  
**Stain:** Shadow  
**Fabric:** R1-163 Campbell

## STANDARD AS SHOWN

Overall size: H 40½" x D 27" x W 30"

Seat Size: D 17" x W 19"

Distance between armrest: 19"

Floor to top of seat cushion: 17"

Seat to top of wood armrest: 8½"

Seat to top of padded armrest: 9½"



• Flipout Footrest



• Padded Arms

## SHOWN WITH ALL OPTIONS



# 4-POST HIGHBACK

092 - 4 POST HIGH BACK REGULAR GLIDER

**Wood:** Brown Maple

**Stain:** Shadow

**Fabric:** C2 -39 Birch

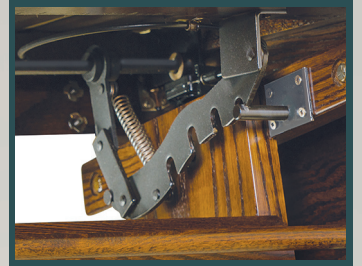
Options available:



• Flipout Footrest



• Padded Arms



• Locking Mechanism

## STANDARD AS SHOWN

Overall size: H 44" x D 30" x W 32"

Seat Size: D 21" x W 23"

Distance between armrest: 20"

Floor to top of seat cushion: 18"

Seat to top of wood armrest: 7½"

Seat to top of padded armrest: 8½"

## SHOWN WITH ALL OPTIONS



## 093 - OTTOMAN

Overall size: H 15" x D 17" x W 19"

# 4-POST HIGHBACK

192 - 4 POST HIGH BACK SWIVEL GLIDER

Options available:

**Wood:** Brown Maple

**Stain:** Shadow

**Fabric:** C2 -39 Birch



• Flipout Footrest



• Padded Arms



• Locking Mechanism

## STANDARD AS SHOWN

Overall size: H 45" x D 30" x W 32"

Seat Size: D 21" x W 23"

Distance between armrest: 20"

Floor to top of seat cushion: 19"

Seat to top of wood armrest: 7½"

Seat to top of padded armrest: 8½"

## SHOWN WITH ALL OPTIONS



# 4-POST CHAIR & A HALF

062 - 4-POST HIGHBACK CHAIR & A HALF GLIDER

**Wood:** QS White Oak  
**Stain:** Almond  
**Fabric:** R1-111 Gelatain

Options available:



• Flipout Footrest



• Padded Armrest



• Locking Mechanism

## STANDARD AS SHOWN

Overall size: H 44" x D 30" x W 39"

Seat Size: D 21" x W 29"

Distance between armrest: 27"

Floor to top of seat cushion: 18"

Seat to top of wood armrest: 7½"

Seat to top of padded armrest: 8½"

## SHOWN WITH ALL OPTIONS



## 193 - JUMBO OTTOMAN

Overall size: H 15" x D 17" x W 26"

# 4-POST LOVE SEAT

292 - 4 POST HIGHBACK LOVE SEAT GLIDER

**Wood:** Red Oak

**Stain:** Asbury

## STANDARD AS SHOWN

Overall size: H 44" x D 30" x W 51"

Seat Size: D 21" x W 42"

Distance between armrest: 39"

Floor to top of seat: 18"

Seat to top of wood armrest: 7½"

Seat to top of padded armrest: 8½"

Options available:



• Flipout Footrest



• Padded Arms



# (SMOOTH) 4-POST HIGHBACK

082 - SMOOTH 4 POST HIGHBACK REGULAR GLIDER

**Wood:** Brown Maple  
**Stain:** Harvest  
**Fabric:** R1 - 136 Zone

Options available:



• Flipout Footrest



• Padded Arms



• Locking Mechanism

## STANDARD AS SHOWN

Overall size: H 44" x D 30" x W 32"

Seat Size: D 21" x W 23"

Distance between armrest: 20"

Floor to top of seat cushion: 18"

Seat to top of wood armrest: 7½"

Seat to top of padded armrest: 8½"

## SHOWN WITH ALL OPTIONS



## 083 - OTTOMAN

Overall size: H 15" x D 17" x W 19"

# (SMOOTH) 4-POST HIGHBACK

182 - SMOOTH 4 POST HIGHBACK SWIVEL GLIDER

**Wood:** Brown Maple  
**Stain:** Harvest  
**Fabric:** R1 - 136 Zone

Options available:



• Flipout Footrest



• Padded Arms



• Locking Mechanism

## STANDARD AS SHOWN

Overall size: H 45" x D 30" x W 32"

Seat Size: D 21" x W 23"

Distance between armrest: 20"

Floor to top of seat cushion: 19"

Seat to top of wood armrest: 7½"

Seat to top of padded armrest: 8½"

## SHOWN WITH ALL OPTIONS



# SWANBACK MINNIE

071 - SWANBACK MINNIE REGULAR GLIDER

**Wood:** Red Oak

**Stain:** Almond

**Fabric:** C2-39 Birch

Options available:



• Flipout Footrest

## STANDARD AS SHOWN

Overall size: H 37½" x D 30" x W 28"

Seat Size: D 17" x W 19"

Distance between armrest: 19"

Floor to top of seat cushion: 16"

Seat to top of armrest: 9½"

## SHOWN WITH FLIPOUT



## 091 - OTTOMAN

Overall size: H 13½" x D 17" x W 19"

# SWANBACK MINNIE

171 - SWANBACK MINNIE SWIVEL GLIDER

**Wood:** Red Oak  
**Stain:** Almond  
**Fabric:** C2-39 Birch

## STANDARD AS SHOWN

Overall size: H 38½" x D 30" x W 28"

Seat Size: D 17" x W 19"

Distance between armrest: 19"

Floor to top of seat cushion: 17"

Seat to top of armrest: 9½"

Options available:



• Flipout Footrest

## SHOWN WITH FLIPOUT



# SWANBACK

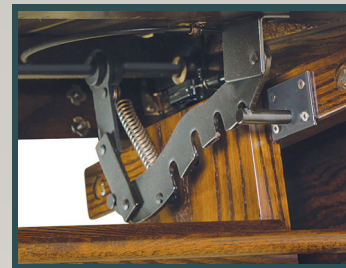
070 - SWANBACK REGULAR GLIDER

**Wood:** Brown Maple  
**Stain:** Earthtone  
**Fabric:** R1-54 Desert

### Options available:



• Flipout Footrest



• Locking Mechanism

### STANDARD AS SHOWN

Overall size: H 41½" x D 33" x W 29"  
Seat Size: D 20" x W 20"  
Distance between armrest: 20"  
Floor to top of seat cushion: 18"  
Seat to top of armrest: 8½"

### SHOWN WITH ALL OPTIONS



### 093 - OTTOMAN

Overall size: H 15" x D 17" x W 19"

# SWANBACK

170 - SWANBACK SWIVEL GLIDER

**Wood:** Brown Maple  
**Stain:** Earthtone  
**Fabric:** R1-54 Desert

Options available:



• Flipout Footrest



• Locking Mechanism

## STANDARD AS SHOWN

Overall size: H 42½" x D 33" x W 29"

Seat Size: D 20" x W 20"

Distance between armrest: 20"

Floor to top of seat cushion: 19"

Seat to top of armrest: 8½"

## SHOWN WITH ALL OPTIONS



# SWANBACK CHAIR & A HALF

072 - SWANBACK CHAIR & A HALF GLIDER

**Wood:** Brown Maple

**Stain:** Earth Tone

**Fabric:** R1-137 Palm

Options available:



• Flipout Footrest



• Locking Mechanism

## **STANDARD AS SHOWN**

Overall size: H 41½" x D 33" x W 36"

Seat Size: D 20" x W 27"

Distance between armrest: 27"

Floor to top of seat: 18"

Seat to top of armrest: 8½"

## **SHOWN WITH FLIPOUT**



## **193 - JUMBO OTTOMAN**

Overall size: H 15" x D 17" x W 26"

# SWANBACK LOVESEAT

271 - SWANBACK LOVESEAT GLIDER

**Wood:** Red Oak

**Stain:** Asbury

## **SHOWN WITH OPTIONAL FLIPOUT FOOTREST**

Overall size: H 41½" x D 30" x W 50"

Seat Size: D 20" x W 41"

Distance between armrest: 41"

Floor to top of seat: 18"

Seat to top of armrest: 8½"

## **Options available:**

- With or without Flipout footrest



Available in Oak, Cherry, Quarter Sawn White Oak, Brown Maple, Hickory & Elm

Page 19

# ARCADIA

## 050 - ARCADIA REGULAR GLIDER

**Wood:** Brown Maple  
**Stain:** Vintage Antique  
**Fabric:** R1-8 Tapioca



• Flipout Footrest



• Padded Arms



• Locking Mechanism

### STANDARD AS SHOWN

Overall size: H 42" x D 31" x W 29"

Seat Size: D 21" x W 23"

Distance between armrest: 20"

Floor to top of seat cushion: 18"

Seat to top of wood armrest: 7½"

Seat to top of padded armrest: 8½"

### SHOWN WITH ALL OPTIONS



### 089 - ARCADIA OTTOMAN

Overall size: H 15" x D 17" x W 19"

# ARCADIA

150 - ARCADIA SWIVEL GLIDER

**Wood:** Brown Maple  
**Stain:** Vintage Antique  
**Fabric:** R1-8 Tapioca

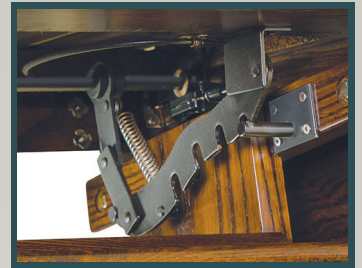
Options available:



• Flipout Footrest



• Padded Arms



• Locking Mechanism

## STANDARD AS SHOWN

Overall size: H 43" x D 31" x W 29"

Seat Size: D 21" x W 23"

Distance between armrest: 20"

Floor to top of seat cushion: 19"

Seat to top of wood armrest: 7½"

Seat to top of padded armrest: 8½"

## SHOWN WITH ALL OPTIONS



# ASHLAND INLAY

## 051 - ASHLAND INLAY REGULAR GLIDER

**Wood:** Red Oak

**Stain:** Dark Knight

**Fabric:** R1-37 Palm

### STANDARD AS SHOWN

Overall size: H 44" x D 31" x W 29"

Seat Size: D 21" x W 23"

Distance between armrest: 20"

Floor to top of seat cushion: 18"

Seat to top of wood armrest: 7½"

Seat to top of padded armrest: 8½"

### Options available:



• Flipout Footrest



• Padded Arms

### SHOWN WITH ALL OPTIONS



### 095 - ASHLAND INLAY OTTOMAN

Overall size: H 15" x D 17" x W 19"

# ASHLAND INLAY

151 - ASHLAND INLAY SWIVEL GLIDER

**Wood:** Red Oak  
**Stain:** Dark Knight  
**Fabric:** R1-37 Palm

Options available:



• Flipout Footrest



• Padded Arms

## STANDARD AS SHOWN

Overall size: H 45" x D 31" x W 29"

Seat Size: D 21" x W 23"

Distance between armrest: 20"

Floor to top of seat cushion: 19"

Seat to top of wood armrest: 7½"

Seat to top of padded armrest: 8½"

## SHOWN WITH ALL OPTIONS



# ASHLAND PANEL

## 052 - ASHLAND PANEL REGULAR GLIDER

**Wood:** Quarter Sawn White Oak

**Stain:** Limed

**Fabric:** C16-27 Baltic



• Flipout Footrest



• Padded Arms



• Locking Mechanism

### STANDARD AS SHOWN

Overall size: H 44" x D 31" x W 29"

Seat Size: D 21" x W 23"

Distance between armrest: 20"

Floor to top of seat cushion: 18"

Seat to top of wood armrest: 7½"

Seat to top of padded armrest: 8½"

### SHOWN WITH ALL OPTIONS



### 090 - ASHLAND PANEL OTTOMAN

Overall size: H 15" x D 17" x W 19"

# ASHLAND PANEL

152 - ASHLAND PANEL SWIVEL GLIDER

**Wood:** Quarter Sawn White Oak

**Stain:** Limed

**Fabric:** C16-27 Baltic

Options available:



• Flipout Footrest



• Padded Arms



• Locking Mechanism

## STANDARD AS SHOWN

Overall size: H 45" x D 31" x W 29"

Seat Size: D 21" x W 23"

Distance between armrest: 20"

Floor to top of seat cushion: 19"

Seat to top of wood armrest: 7½"

Seat to top of padded armrest: 8½"

## SHOWN WITH ALL OPTIONS



# SEBANA SLAT

## 200 - SEBANA SLAT REGULAR GLIDER

**Wood:** Red Oak  
**Stain:** Light Asbury  
**Fabric:** C16-3 Fritter

### STANDARD AS SHOWN

Overall size: H 43½" x D 32" x W 30"

Seat Size: D 20" x W 22"

Distance between armrest: 21½"

Floor to top of seat cushion: 18"

Seat to top of wood armrest: 8½"

Seat to top of padded armrest: 10"

Options available:



• Padded Armrest

### 300 - SEBANA SLAT SWIVEL GLIDER

Swivel base: 1" higher



See page 35 for quick ship details.

### 900 - SEBANA SLAT OTTOMAN

Overall size: H 15¾" x D 17" x W 19"

# SEBANA SARATOGA

203 - SEBANA SARATOGA REGULAR GLIDER

**Wood:** Brown Maple  
**Stain:** English Cottage  
**Fabric:** C16-11 Astrid

## STANDARD AS SHOWN

Overall size: H 43½" x D 32" x W 30"

Seat Size: D 20" x W 22"

Distance between armrest: 21½"

Floor to top of seat cushion: 18"

Seat to top of wood armrest: 8½"

Seat to top of padded armrest: 10"

Options available:



• Padded armrest

## 303 - SEBANA SARATOGA SWIVEL GLIDER

Swivel base: 1" higher



## 903 - SEBANA SARATOGA OTTOMAN

Overall size: H 15¾" x D 17" x W 19"



# REDWING

075 - REDWING GLIDER

**Wood:** Red Oak

**Stain:** Almond

**Fabric:** 25-20 Rain

## STANDARD AS SHOWN

Overall size: H 38¼" x D 32" x W 29"

Seat Size: D 19" x W 22¼"

Distance between armrest: 22"

Floor to top of seat cushion: 17½"

Seat to top of wood armrest: 8"

Options available:

**175 - REDWING SWIVEL GLIDER**

Swivel base: 1" higher



## 079 - OTTOMAN

Overall size: H 14" x D 17¼" x W 19"

# REMI

076 - REMI GLIDER

**Wood:** Brown Maple  
**Stain:** Shadow  
**Fabric:** 23-13 White Sand

**Options available:**  
**176 - REMI SWIVEL GLIDER**  
Swivel base: 1" higher

## STANDARD AS SHOWN

Overall size: H 39½" x D 31" x W 28"  
Seat Size: D 18½" x W 22"  
Distance between armrest: 20"  
Floor to top of seat cushion: 17½"  
Seat to top of padded armrest: 9½"



## 079 OTTOMAN

Overall size: H 14" x D 17¼" x W 19"



See page 35 for quick ship details.

Available in Red Oak & Brown Maple only

# LEXI "NEW"

077 - LEXI GLIDER

Wood: Brown Maple

Stain: Sealy

Fabric: 7-97 Ecrú

## STANDARD AS SHOWN

Overall size: H 41" x D 31" x W 28"

Seat Size: D 18½" x W 22"

Distance between wood armrest: 21"

Distance between padded armrest: 20"

Floor to top of seat cushion: 18"

Seat to top of wood armrest: 8"

Seat to top of padded armrest: 8½"

## Options available:

### 177 - LEXI SWIVEL GLIDER

Swivel base: 1" higher

## SHOWN WITH OPTIONAL PADDED ARMS



Option: Plain Back



## 079 - OTTOMAN

Overall size: H 14" x D 17¼" x W 19"

Available in Red Oak & Brown Maple only

# GRANDPA "COUNTRY CHAIRS SERIES"

## 040 - GRANDPA ROCKER

**Wood:** Brown Maple

**Stain:** Dark Knight

**Options available:**

- Fitted cushion (page 32)

### **STANDARD AS SHOWN**

Overall size: H 43" x D 36" x W 25½"

Seat Size: D 18" x W 20"

Distance between armrest: 19½"

Floor to top of wood seat: 18"

Floor to top of cushion seat: 19½"

Wood seat to top of armrest: 11"

Cushion seat to top of armrest: 9½"



# "COUNTRY CHAIRS SERIES" GRANDPA

## 041 - GRANDPA REGULAR GLIDER

**Wood:** Red Oak  
**Stain:** Michaels Cherry

### STANDARD AS SHOWN

Overall size: H 44" x D 29" x W 25½"  
Seat Size: D 18" x W 20"  
Distance between armrest: 19½"  
Floor to top of wood seat: 17"  
Floor to top of cushion seat: 18½"  
Wood seat to top of armrest: 11"  
Cushion seat to top of armrest: 9½"

### Options available:

- Fitted cushion

### 141 - GRANDPA SWIVEL GLIDER

Swivel base: 1" higher

### SHOWN WITH FITTED CUSHION



### 049 - OTTOMAN

Size without cushion: H 12¾" x D 19" x W 18"  
Overall size with cushion: H 15¾" x D 19" x W 18"

# WAVE "COUNTRY CHAIRS SERIES"

142 - WAVE SWIVEL GLIDER

**Wood:** Cherry

**Stain:** Burnt Umber

## **STANDARD AS SHOWN**

Overall size: H 45" x D 29" x W 23½"

Seat Size: D 18" x W 20"

Distance between armrest: 22½"

Floor to top of wood seat: 18"

Floor to top of cushion seat: 19½"

Wood seat to top of armrest: 11"

Cushion seat to top of armrest: 9½"

## **Options available:**

- Fitted cushion (page 32)
- 049 Ottoman (page 32)

## **042 - WAVE REGULAR GLIDER**

Regular base: 1" lower



Available in Oak, Cherry, Quarter Sawn White Oak, Brown Maple & Hickory

"COUNTRY CHAIRS SERIES" **RUHE STUHL**  
143 - RUHE STUHL SWIVEL GLIDER

**Wood:** Red Oak

**Stain:** Earthtone

**STANDARD AS SHOWN**

Overall size: H 45" x D 29" x W 24"

Seat Size: D 18" x W 20"

Distance between armrest: 19½"

Floor to top of wood seat: 18"

Floor to top of cushion seat: 19½"

Wood seat to top of armrest: 11"

Cushion seat to top of armrest: 9½"

**Options available:**

- Fitted cushion (page 32)
- 049 Ottoman (page 32)

**043 - RUHE STUHL REGULAR GLIDER**

Regular base: 1" lower





# QUICKSHIP GLIDERS

We can have your choice of these Gliders shipped to the finish shop within **5 business days**, if ordered with one of the fabrics shown below. For **Quick Ship Program** each product is offered in 1 wood species as listed.

Is the fabric you want not listed below? Order with your choice of fabric and we can still ship it to the finish shop in 10 business days!

## 076 - REMI GLIDER (SHOWN)

### 176 - REMI SWIVEL GLIDER

See page 29 for larger photos, Available in Brown Maple

Overall size: H 39½" x D 31" x W 28"

Seat Size: D 18½" x W 22"

Distance between armrest: 20"

Floor to top of seat cushion: 17½"

Seat to top of padded armrest: 9½"

## 079 - OTTOMAN

Overall size: H 14" x D 17¼" x W 19"



Revolution  
R1-51 Feeble



Revolution  
R1-54 Desert



Solid Fabric  
16-81 Linen



Solid Fabric  
22-52 Wren



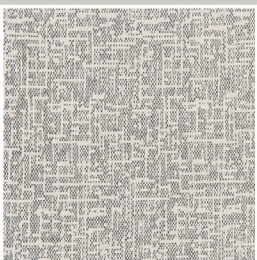
Performance  
(Crypton)  
C16-3 Fritter



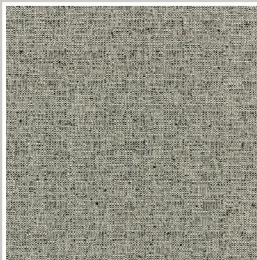
Performance  
(Crypton)  
C2-37 Yo-Yo



Performance  
(Crypton)  
C16-25 Wellington



Performance  
(Crypton)  
C8-59 Metal



## 300 - SEBANA SLAT SWIVEL GLIDER

### 200 - SEBANA SLAT REGULAR GLIDER (SHOWN)

See page 26 for larger photos, Available in Red Oak

Overall size: H 43½" x D 32" x W 30"

Seat Size: D 20" x W 22"

Distance between armrest: 21½"

Floor to top of seat cushion: 18"

Seat to top of wood armrest: 8½"

Seat to top of padded armrest: 10"

## 900 - SEBANA SLAT OTTOMAN

Overall size: H 15¾" x D 17" x W 19"



