

Country Lanes

WOODWORKING, LLC

VINTAGE FURNITURE IN PINE

Featuring our popular
Gold Mine Collection



Two Thousand Twenty Two

Gold Mine Collection

- Resembles Rustic Pallet Furniture
- Constructed with all NEW Pine Wood
- Glued & nailed - Backs are screwed on
- Adjustable shelves
- Metal inserts optional unless noted



Aspen Hall Seat
512
42x78x17 1/2 D
Metal Insert Standard
Red



Granny Hutch
509
42x80x19 1/2 D
2 adjustable shelves
White

Granny Hutch
509B
Base Only
42x34x20 1/4 D
1 adjustable shelf



35" Outhouse Shelf
#521
35x10 1/2 x 6 1/4 D
Chelsea Gray

We use Sustainable Pine Wood
4 MILLION trees planted DAILY
industry wide!

This is just a small sample
of what can be done.
YOU SELL IT -WE BUILD IT!!



23" Outhouse Shelf
#522
23x10 1/2 x 6 1/4 D
Sage

Gold Mine Collection

- Resembles Rustic Pallet Furniture
- Constructed with all NEW Pine Wood
- Glued & nailed - Backs are screwed on
- Adjustable shelves
- Metal inserts optional unless noted



Pantry
504
36x71x19½D
3 adjustable shelves
White



Eagle River Hutch
510
42x80x20¼D
2 adjustable shelves
Red

Eagle River Hutch Base
510B - Base Only
42x34x20¼D

1 adjustable shelf - Metal inserts optional



Coffee Bar
515
35x34x12¾D
1 adjustable shelf
White



Console Cabinet
503
41x36x12½D
1 adjustable shelf
Sage

Gold Mine Collection

- Resembles Rustic Pallet Furniture
- Constructed with all NEW Pine Wood
- Glued & nailed - Backs are screwed on
- Adjustable shelves
- Metal inserts optional unless noted



Rexford Sink
516
32x38x15³/₄D
1 adjustable shelf
Seafoam



Glendale Kitchen Island

513

48x36x32D

Metal insert standard on back side only
White Almond Top



Large Jelly Cupboard
501
36x48x15D
2 shelves
Black



Small Jelly Cupboard
500
23x48x15D
2 shelves
Red



35" Corner Cabinet
517
35x71x13D
24" Wall
White



24" Corner Cabinet
518
24x71x13D
15" Wall
Black

Gold Mine Collection

- Resembles Rustic Pallet Furniture
- Constructed with all NEW Pine Wood
- Glued & nailed - Backs are screwed on
- Adjustable shelves
- Metal inserts optional unless noted



Settler's Hutch
529

48x78x19½D
Metal Inserts
Bel-Air w/Earthtone
529B - Base Only
48x34x19½D



Settler's Hutch
529

48x78x19½D
Std RSW Maple Top
White w/Sealy
529B - Base Only
48x34x19½D



Little Settler's Hutch
530

32 1/8x78x19½D
Red w/Bel-Air
530B - Base Only
32 1/8x34x19½D



Little Settler's Hutch
530

32 1/8x78x19½D
Std RSW Maple Top
Metal Inserts
Sage w/Earthtone
530B - Base Only
32 1/8x34x19½D

Gold Mine Collection

- Resembles Rustic Pallet Furniture
- Constructed with all NEW Pine Wood
- Glued & nailed - Backs are screwed on
- Adjustable shelves
- Metal inserts optional unless noted



Red Rock Hutch

511

36x74 1/8x19 1/2 D

Metal Inserts

1 Adj Shelf

White w/Earthtone

511B - Base Only

36x42 1/8x19 1/2 D

1 Adj Shelf

Std RSW Maple Top



Coffee Station

528

42x35x15 3/4 D

Metal Inserts

All Bel Air Stain

Std RSW Maple Top



Sawtooth Cabinet

527

23x38x15 3/4 D

Metal Inserts

1 Adj Shelf

Seafoam



Treasure Chest

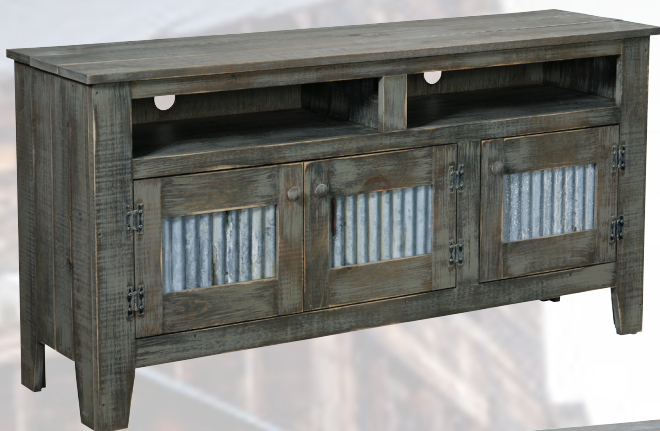
531

33 1/2 x 21 1/2 x 19 1/2 D

Bel Air

Gold Mine Collection

- Resembles Rustic Pallet Furniture
- Constructed with all NEW Pine Wood
- Glued & nailed - Backs are screwed on
- Adjustable shelves
- Metal inserts optional unless noted



60" Mesa TV Cabinet
514-60
60x30x15³/₄D
1 adjustable shelf
Sage w/Metal



42" Mesa TV Cabinet
514-42
42x30x15³/₄D
1 adjustable shelf
White



72" Mesa TV Cabinet
514-60
72x30x15³/₄D
1 adjustable shelf
Chelsea Gray



Single Trash Bin Base Only
519B
22³/₄x34x15³/₄D
Black

Single Trash Bin w/Hutch
519
22³/₄x70x15³/₄D
No Waste Basket
Metal insert optional
Black



Double Trash Bin Base Only
520B
42³/₈x34x15³/₄D
Sage w/Metal

Double Trash Bin w/Hutch
520
42³/₈x70x15³/₄D
No Waste Basket
Metal insert optional
Sage w/Metal

Gold Mine Collection

- Resembles Rustic Pallet Furniture
- Constructed with all NEW Pine Wood
- Glued & nailed - Backs are screwed on
- Adjustable shelves
- Metal inserts optional unless noted



Blue River Sideboard

524
47x36x15³/₄D
Chelsea Gray



Tulsa TV Cabinet

523
60x30x15¹/₂D
1 adjustable shelf
Burnt Orange w/Metal



Tulsa TV Cabinet

523
60x30x16¹/₂D
1 adjustable shelf
White

Gold Mine Collection

- Resembles Rustic Pallet Furniture
- Constructed with all NEW Pine Wood
- Glued & nailed - Backs are screwed on
- Adjustable shelves
- Metal inserts optional unless noted



3' Bookcase

#508

36x36x12³/₄D

1 adjustable shelf

Brown Pine

4' Bookcase

#507

36x48x12³/₄D

2 adjustable shelves

Michael's Cherry

5' Bookcase

#506

36x60x12³/₄D

3 adjustable shelves

Black w/Burnt Orange Back

6' Bookcase

#505

36x72x12³/₄D

4 adjustable shelves

Red



Coffee Table

#502C

20x24x17¹/₄D

Chelsea Gray



End Table

#502E

20x24x17¹/₄D

Chelsea Gray

Gold Mine Collection

- Resembles Rustic Pallet Furniture
- Constructed with all NEW Pine Wood
- Glued & nailed - Backs are screwed on
- Adjustable shelves
- Metal inserts optional unless noted

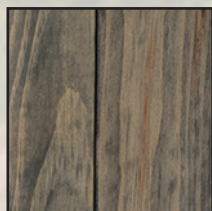


Display Console
525
27³/₄x30x9¹/₄D
Seafoam



Fern Stands
526
11¹/₄x24x11¹/₄D
All Colors

Bases have soft close doors



Bel Air



Chelsea Gray



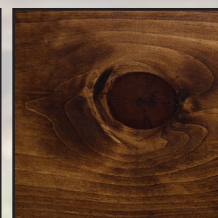
White



Sage



Sealy



Michaels Cherry



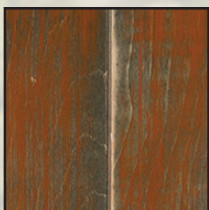
Red



Black



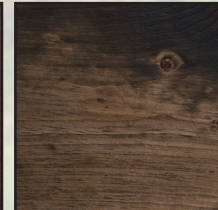
Seafoam



Burnt Orange



Earthtone



Brown Pine



Cafe Hutch
95
60" w x 82" h x 20.75" d
Black w/ Michael's Cherry Top



Little Mandie w/ Hutch
97
32.125" w x 80" h x 20.75" d
Std Maple Top
Red (Sand-Thru) w/ Burnt Umber Top



Mandie's Hutch
98
50" w x 80" h x 20.75" d
Shown in Black w/ Micheal's Cherry top



Shown in Seafoam.

Lizzie's Hutch
100
48" w x 82" h x 20.75" d
Shown in Black w/Michael's Cherry
stained top & baskets



Sadie's Hutch
99
60" w x 82" h x 20.75" d
Shown in Buttermilk w/Burnt Umber
stained top & baskets



Little Lizzie w/Baskets
96B
36" w x 80" h x 20.75" d
Std Maple Top
Black (Sand-Thru) w/Michaels Cherry Top

Little Lizzie w/No Baskets
96



Georgetown Pantry
232
36.5" w x 71" h x 17.25" d
Shown in Buttermilk w/Rustic Willow
tins. Features 3 adjustable shelves
232W ... Georgetown Pantry All Wood Doors



Vintage Jelly Cupboard
233
36.5" w x 56.25" h x 16" d
Shown in Black and features
3 adjustable shelves
Vintage Jelly Cupboard
233W All Wood Doors



Pottery Pantry
237
43.5" w x 65.06" h x 16" d
Shown in Red.
Features 3 adjustable shelves



Hall Tree w/Mirror
116
46.5" w x 78" h x 18.75" d
Shown in Black



Biscuit Safe w/Hutch
102
38" w x 70" h x 12.75" d
Shown in Black w/Michael's
Cherry stained back



Cape Cod Curio
120
25.06" w x 71" h x 17.25" d
Shown in Country White
and features 2 adjustable shelves



Cape Cod Sideboard
121
46" w x 71" h x 17.25" d
Shown in Country White and
features 2 adjustable shelves



24" Corner Cabinet
117
23.375" w x 72" h x 11" d
15" Wall
Shown in Black



28" Corner Cabinet
118
27.375" w x 72" h x 13" d
18" Wall
Shown in Buttermilk



35" Corner Cabinet
119
34.75" w x 72" h x 13" d
24" Wall
Shown in Black



Sm. Honey Cabinet
211
20.56" w x 36" h x 10.5" d
Shown in Chili Pepper
Adjustable shelves



Lg. Honey Cabinet
212
35" w x 36" h x 10.5" d
Shown in Pepper Pecan
Adjustable shelves



Helen's Buffet
244
36.5" w x 58" h x 16.5" d
Shown in Seafoam and
features 2 adjustable shelves



Lg. Chimney Safe w/Drawer
135
14.5" w x 72" h x 12.75" d
Shown in Burnt Umber and
features 4 adjustable shelves



Lg. Chimney Safe
136
14.5" w x 72" h x 12.75" d
Shown in Buttermilk and
features 4 adjustable shelves



Sm. Chimney Safe
137
14.5" w x 48" h x 12.75" d
Shown in Black and
features 3 adjustable shelves



Grandma's Cubby
165
46.5" w x 38.5" h x 14" d
Shown in Monument Gray



Bookcase w/Hutch
108
32" w x 66" h x 12.75" d
Shown in Buttermilk



2' Settle Bench
133
24" w x 69.5" h x 16.5" d
Shown in Harvest



3' Settle Bench
134
36" w x 69.5" h x 16.5" d
Shown in Black



Lg. Chimney Safe w/Drawer
135
14.5" w x 72" h x 12.75" d
Shown in Burnt Umber and
features 4 adjustable shelves



Lg. Chimney Safe
136
14.5" w x 72" h x 12.75" d
Shown in Buttermilk and
features 4 adjustable shelves



Sm. Chimney Safe
137
14.5" w x 48" h x 12.75" d
Shown in Black and
features 3 adjustable shelves



Grandma's Cubby
165
46.5" w x 38.5" h x 14" d
Shown in Monument Gray



Sm. Jelly Cupboard
201
22"w x 48"h x 12.75"d
Shown in Black
Adjustable shelves



Lg. Jelly Cupboard
202
36"w x 48"h x 12.75"d
Shown in Cranberry Red
Adjustable shelves



Lg. Pie Safe
204W
35.5"w x 48"h x 12.75"d
Shown in Navy
Distress Antique
2 Adjustable Shelves



Sm. Pie Safe
203
21.06"w x 48"h x 12.75"d
Shown in Cranberry Red
2 Adjustable Shelves



Sm. Pie Safe
203T
21.06"w x 48"h x 12.75"d
Shown in Burnt Orange
w/Wheat Tin
Distress Antique
2 Adjustable Shelves



Delta Kitchen Island

242

49.5" w x 36" h x 24" d

Shown in Ferret Brown w/Sealy top and features 1 adjustable shelf,
1 pull-out waste basket, and 1 pull-out cookbook/Spice drawer



Ella's Kitchen Server

241

46" w x 36" h x 20" d

Shown in Buttermilk w/Nutmeg
top and features 1 adjustable shelf



Double Trash Bin
213-2
40.375" w x 34.125" h x 12.75" d
Shown in Navy
Features 2 waste baskets
and soft close doors



Trash Bin
213
21.75" w x 34.125" h x 12.75" d
Shown in Spicy Mustard
Features 1 waste basket
and a soft close door



End Tables
311
16.5" w x 24" h x 15.25" d
Shown in Buttermilk, Red
and Black



Lg. Console Cabinet
219
41" w x 36" h x 10.75" d
Shown in Buttermilk and features
2 adjustable shelves



Sm. Console Cabinet
220
23.82" w x 36" h x 10.75" d
Shown in Buttermilk and features
2 adjustable shelves



Storage Bench w/Raised Panel
230R
35" w x 17" h x 11" d
Finish - Chelsea Gray w/Espresso Top

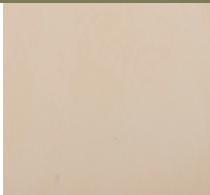
Furniture Construction

- ◊ Screws are used to assemble your furniture—not nails
- ◊ Backs are fastened with screws—not staples
- ◊ When backs are exposed, beaded tongue- in-groove solid pine boards are used
- ◊ Tack slides on feet
- ◊ Built with quality Eastern White Pine
- ◊ Inside and backs of cabinets are all finished
- ◊ Standard Finish—Sealer, 2 coats of paint, sand through, then highlighted with stain
- ◊ Optional distressing & antiquing

Paint Colors



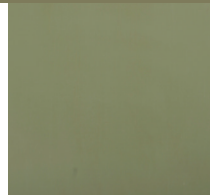
Black



Buttermilk



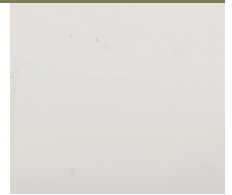
Candleberry Green



Celery

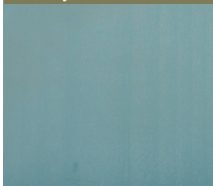


Chelsea Gray

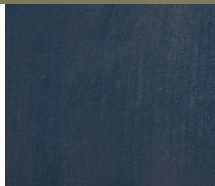


Country White

Paint Colors



Monument Gray



Olde Navy



Red Cranberry

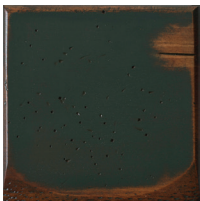


Sage



Seafoam

Antique Distressed Colors



Green



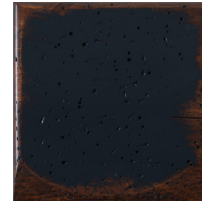
Mustard



Red



Brown



Navy



Chelsea Gray



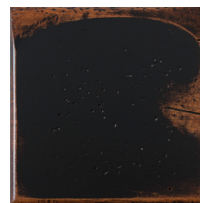
Seafoam



Celery



Sage



Black



Burnt Orange



Buttermilk

On lighter colors you will have some bleed-thru because of knots in the wood. We are not responsible for this as we have no control of what the wood will do. We will do all we can to avoid this.

Buy Furniture and Enjoy!